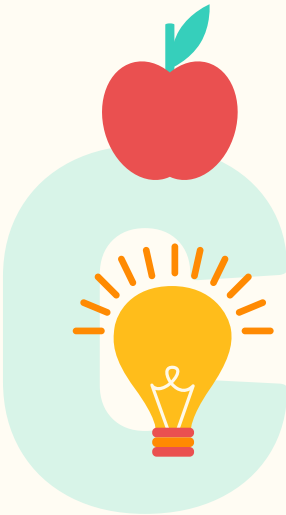
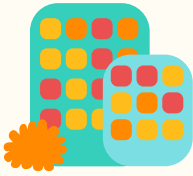
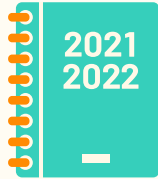
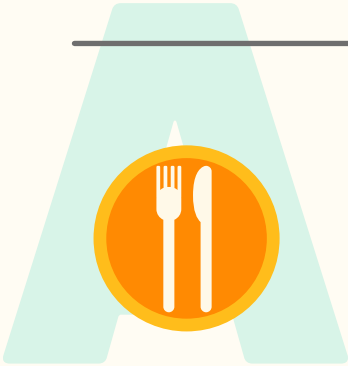


STUDENT GUIDE 2021



THE STUDENT UNION'S CONTACT INFORMATION

LYY's customer service point is located in the F-wing of the University of Lapland. The opening hours can be found on lyy.fi and on LYY's Facebook page!

LYY's office is located at Ahkiomaantie 23 B, 96300 Rovaniemi. The office is open as agreed.

E-MAIL: lyy@lyy.fi

PHONE: +358 44 787 5670

Don't hesitate to contact LYY's office or associates if you have any questions or need help with something. LYY wishes you a great semester!

FOLLOW US ON SOCIAL MEDIA



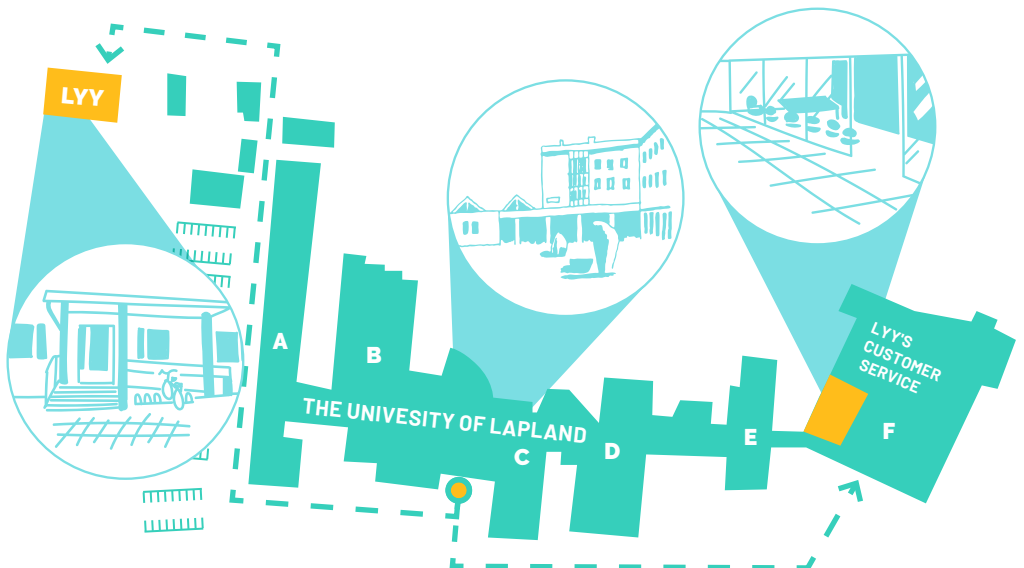
WWW.LYY.FI



LAPINYLIOPISTONYLIOPIILASKUNTA



LYYGRAM



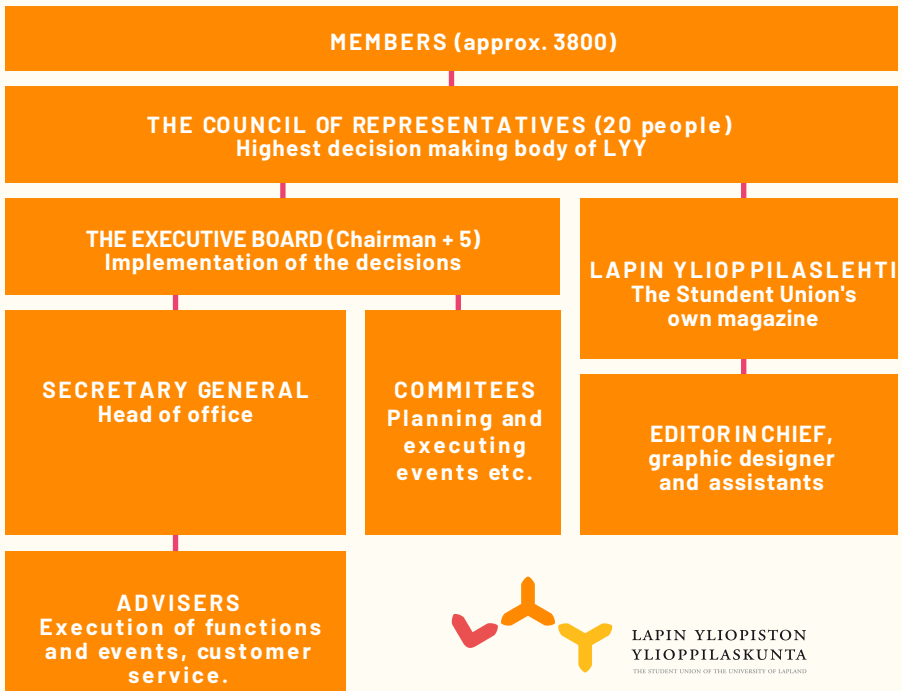
What is LYY?

LYY, also known as the Student Union of the University of Lapland, takes care of the students' rights and interests. LYY makes sure that the students' voice is heard everywhere at the University and in the surrounding society. LYY has its representation in the administration of the University, and through cooperation with the National Union of University Students in Finland (SYL), LYY also represents students in both the local and the national level of decision-making.

The student union arranges a variety of events and activities, offers services and negotiates student discounts for its members. For the degree students, the membership of LYY is mandatory but exchange students have the possibility to choose whether they want to become members of LYY or not. By being a member you are eligible for some great discounts, like student meals and transportation.

More information about LYY can be found on our website www.lyy.fi

LYY'S ORGANISATION



LAPIN YLIOPISTON
YLIOPPILASKUNTA
THE STUDENT UNION OF THE UNIVERSITY OF LAPLAND

THE COUNCIL OF REPRESENTATIVES

The highest decision making body in the student community is the Council of Representatives, also known as Edari. The 20 representatives for the council and their deputies are elected every other year. The council assembles once a month except for the summer. The Council of Representatives makes annual decisions, e.g. about LYY's plan of action, the budget and the membership fee. They also elect LYY's Executive Board and make the final decision in the recruitment of the Secretary General.

THE EXECUTIVE BOARD

The Executive Board of LYY takes care of the implementation of the decisions made by the Council of Representatives. The board members are chosen by the Council of Representatives around every November or December. The Board includes the Chair of the Board and 4-8 members of the board. The Executive Board works in close cooperation with the crew of LYY in order to protect the interests of the students and to keep up the active student life of the University of Lapland. The board membership is a position of responsibility. The board decides and assigns the roles for each board member every year.

THE CREW

LYY's office is located in Ahkiomaantie 23 B, very close to the campus area. LYY also has a service desk in the F-wing of the University. The Secretary General, the Adviser of Educational and Social Affairs and the Adviser of Organizations and Communications work full-time at the office. You can often meet some members of the Executive Board and the editorial staff of the student magazine at the office aswell. The office of LYY is the place where students can get guidance for their problems and where the events and activities of LYY are planned.



**ALL CONTACT
INFORMATION CAN
BE FOUND ON OUR
WEBSITE
WWW.LYY.FI**

LYY services and benefits

As a member of LYY you'll get many benefits and services. Here are some of them!

LYY'S SAUNA

For members

Mon-Thurs 100€

Fri-Sun 125€

For others

Mon-Thurs 120€

Fri-Sun 250€

CALENDAR

LYY offers a FREE academic year calendar for members.

PRODUCTS

LYY has equipment for rent, and hoodies, sitting books etc. for sale. As always, members get a discount!

MEIDÄN LOVISA

The campus restaurant Meidän Lovisa is owned by the student union (=students!). Try the delicious student-priced lunches or stop by for a quick cup of coffee.

Find all our services at lyy.fi!



As a member of LYY
you'll get many
benefits and services.

LEGAL AID

The University of Lapland student union offers its members legal aid services. The purpose of the legal aid is to advise the university students who have worries or issues that require legal expertise. Good examples of such issues could be renting an apartment or uncertainty considering your new working contract. Contact the legal aid services by e-mail at [oikeusapu\(at\)lyy.fi](mailto:oikeusapu(at)lyy.fi).

HARRASSMENT CONTACT PERSONS

If a student experiences some kind of harassment, bullying or discrimination in their studies or in the student community, they can contact LYY's harassment contact persons. The contact persons handle each case confidentially and no actions are taken without an agreement. LYY has two harassment contact persons:

Antti Eteläaho
edunvalvonta@lyy.fi

Emmi Saastamoinen
hairinta@lyy.fi

How to get started?

1

Pay the student union's membership fee at the customer service point (the University's F-wing) or office (Ahkiomaantie 23 B).

OR

You can pay the membership fee straight to LYY from a non-Finnish bank account with the following information:

Beneficiary: Lapin yliopiston ylioppilaskunta

IBAN: FI13 5640 0220 0637 67 with POHJOLA BANK PLC Helsinki

BIC/SWIFT: OKOYFIHH

Reference: student's name

Amount: 26€ / Autumn semester

Name of the bank: Pohjolan

Osuuspankki Koskikadun konttori

Address of the bank: Koskikatu 12, PL 96101 Rovaniemi, Finland

Send your name, student number and the receipt from the purchase to the Student Union lyy (at) lyy.fi

2

Download the Frank application and register as a user to get your digital student card for free! If you would like a plastic card you can order one from frank.fi.

3

Enjoy your student benefits! For example, you can get a discount from a great variety of physical activities by getting yourself the student wellness pass!

4

If you have any questions or worries, contact your tutors, teachers, the student services or LYY.

5

Enjoy your time at the University of Lapland and in our student community!

About the student card

STUDENT CARD

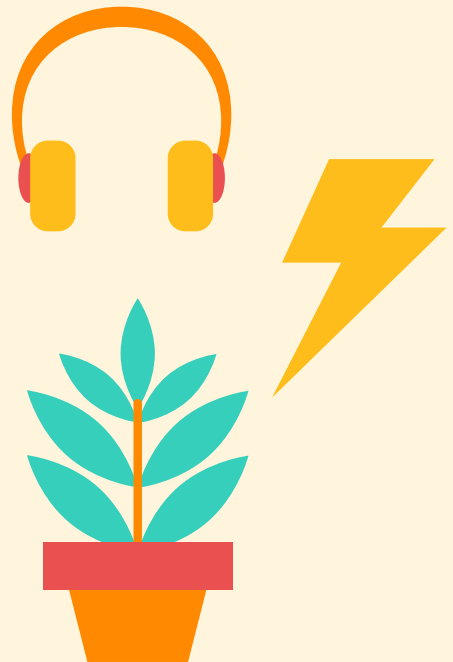
If you have registered yourself as a present student and have paid the membership fee, you can get yourself a semester sticker to your student card from the LYY's customer service point or from the office at Ahkiomaantie. You can also have your student card as in digital version too. LYY members are eligible for Frank, Tuudo and Pivo student card applications.

FRANK

Frank offers you the official student identifications that you can use both in Finland and abroad. From Frank you can get a plastic student card as well as a digital one. Frank also offers student discounts and benefits all over Finland, and with the international ISIC student ID, over 150,000 discounts in over 130 countries. As a student, you will find two kinds of benefits from Frank's service: traditional in-store benefits and discount codes for online shopping. Some of the benefits are ongoing, some are limited time offers, and new discounts are coming in constantly.

PIVO

Pivo is a free payment application for all bank's customers that now also offers a student ID. Pivo and Pivo's student card are free. You just have to be a member of your student organisation. Exchange students are welcome too! For registration, you only need your phone number, online bank user identifiers and a payment card from a Finnish bank. Pivo's student card provides you with Kela's meal subsidy, and with student discounts for bus and train travel. And, of course, all the other student benefits!





LAPIN YLIOPISTON YLIOPPILASKUNTA
THE STUDENT UNION OF THE UNIVERSITY OF LAPLAND